

2008 Early In-Person Voting



Author: Daniel Brill, GIS Analyst

Franklin County Board of Elections

William Anthony, Director

Dana Walch, Deputy Director



Summary: This report was conducted to identify when EIP voting was most utilized, to identify spatial patterns/trends of EIP voters, and to study the racial and ethnic make-up of EIP voters. A file of all 2008 EIP voters in Franklin County along with 2010 Census data were used as the basis of this report.

This report finds that EIP voting accounted for 9% (51,785) of all ballots cast in 2008. The report suggests that 31% of all EIP voters in Franklin County were African American while 65% were white. This figure indicates that a disproportionately higher amount of African Americans utilized EIP voting as African Americans represented only 21% of all ballots cast in 2008. In relation to this finding, the report finds that a disproportionately lower number of white voters utilized EIP voting as white voters were projected to have constituted 65% of all EIP voters while accounting for 74% of all ballots cast.¹ Overall it was concluded that 8% of all white ballots cast were EIP while 13.3% of all African American ballots cast were EIP. This report also indicates that 48% (24,896) of EIP ballots cast were during either afterhours on weekdays, on weekends, or the Monday before the election.² The study also shows that 21% of all weekday EIP voting took place after 5pm.³ Analysis of EIP voting from Friday through Monday before the 2008 election shows that an even higher amount of African Americans (34%) utilized this period to cast their votes. Furthermore, this report finds that amongst EIP voters, registered Democrats outnumbered registered Republicans by a ratio of 3.8:1 whereas all 2008 voters represented a ratio of 2.3:1.⁴ Figures for the Hispanic population were relatively consistent as both EIP and overall voting figures show a number representing about 2% of the whole.

In addition to the statistical analysis, maps comparing African American population density and EIP voter density show an apparent spatial correlation.⁵

Method: A list of all Franklin County early in-person voters and their addresses was used to place each individual voter as a point on a map. A 2010 Census map at the block-group level was used to place each voter into one of the 886 block-groups in Franklin County. (A census block-group is a geographical unit used by the US Census Bureau. It is the smallest geographical unit for which the bureau publishes sample data, i.e. data which is only collected from a fraction of all households.) 2010 Census demographic data was used to determine the percentage of specific races and ethnicities within each block-group. The number of voters in each block-group was summed and then multiplied by the percentage of African American, White, and Hispanic population within each block group. For example: A block group with 100 voters and a 75% white population would yield 75 white voters.

To find a baseline summary for racial and ethnic proportions of all 2008 voters 60,000 ballots cast from 2008 were chosen at random and then joined to Census block-group data in the same manner as the EIP ballots described above.

¹ Table 3, 4

² Table 5, 11

³ Table 10

⁴ Table 12, 13

⁵ Side by Side Comparison Map



Voters wait outside Veterans Memorial



A line of voters curves around outside and continues deep inside building.



Voters nearing the entrance of Veterans Memorial



Voters in line inside Veterans Memorial

Franklin County: Early In-Person (EIP) Voting 2008

Table 1:	Franklin County Demographics	Population	Percentage
	Total 18 Years Old and Over:	886,962	100.00%
	Total African American 18 and Over:	172,002	19.39%
	Total White 18 and Over:	650,872	73.38%
	Total Hispanic 18 and Over:	35,288	3.98%

Table 2:	General Voting	Voters	Percentage
	All Voting:	564,971	100.00%
	All EIP:	51,785	9.17%

Table 3:	2008 Voting Demographics (Entire Election)	Voters	Percentage
	Total:	60,000	100.00%
	White:	44,475	74.13%
	African American:	12,697	21.16%
	Hispanic	1,214	2.02%

60,000 voter sample (11% of all ballots cast)

Table 4:	EIP Voting Demographics	Voters	Percentage
	Total:	51,785	100.00%
	White:	33,556	64.80%
	African American:	15,932	30.77%
	Hispanic:	1,084	2.09%

Table 5:	EIP Groups	Voters	Percentage
	All EIP:	51,785	100.00%
	All Weekdays (Excluding Monday before Election):	34,121	65.89%
	All Weekends:	15,829	30.57%
	Weekdays After 5pm:	7,232	13.97%
	Weekend Before Election (Including Monday)	9,069	17.51%

Table 6:	Weekend Before Election EIP (Including following Monday)	Voters	Percentage
	Total:	9,057	100.00%
	White:	5,592	61.74%
	African American:	3,052	33.70%
	Hispanic:	201	2.22%

Table 7:	All Weekends EIP	Voters	Percentage
	Total:	15,829	100.00%
	White:	10,010	63.24%
	African American:	5,099	32.21%
	Hispanic:	345	2.18%

Table 8:

Weekdays EIP (Excluding Monday Before Election)	Voters	Percentage
Total:	34,121	100.00%
White:	22,353	65.51%
African American:	10,275	30.11%
Hispanic:	701	2.05%

Table 9:

Weekdays Afterhours EIP (Excluding Monday Before)	Voters	Percentage
Total:	7,232	100.00%
White:	4,736	65.49%
African American:	2,156	29.81%
Hispanic:	154	2.13%

Table 10:

Weekdays Split	Voters	Percentage
Total:	34,121	100.00%
8am - 5pm:	26,889	78.80%
After 5pm:	7,232	21.20%

Table 11:

Monday Before Election	Voters	Percentage
Total:	3,564	100.00%
White:	2,180	61.17%
African American:	1,220	34.23%
Hispanic:	79	2.22%

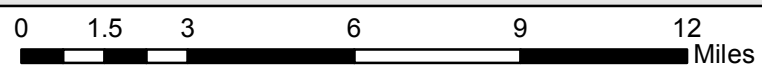
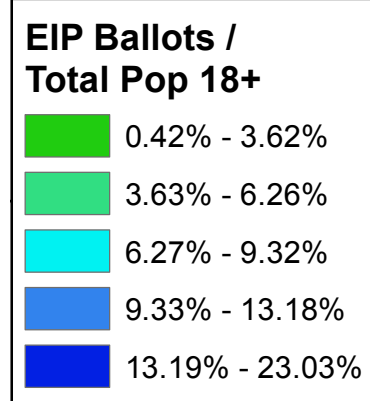
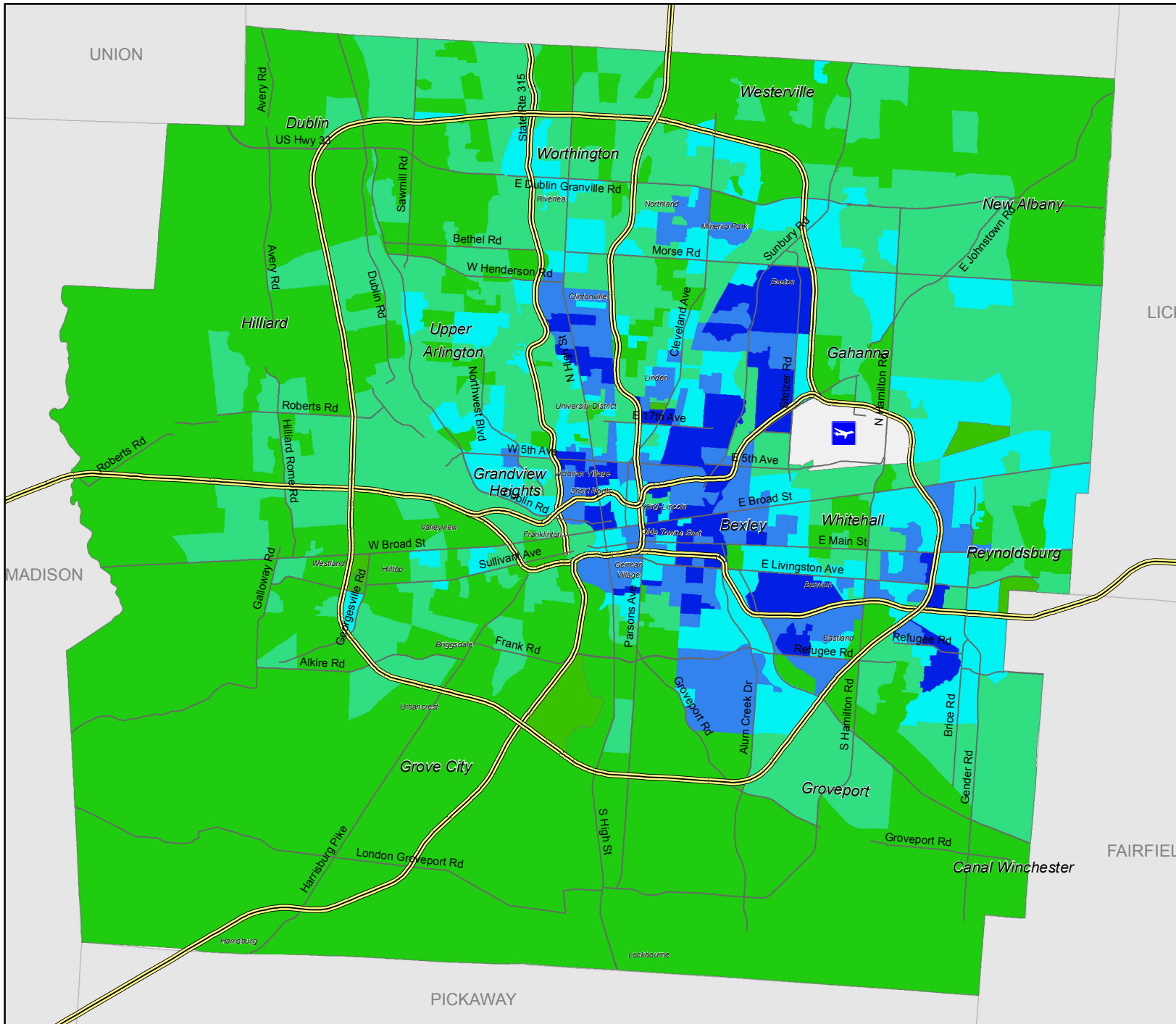
Table 12:

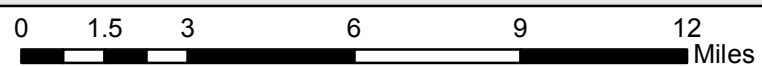
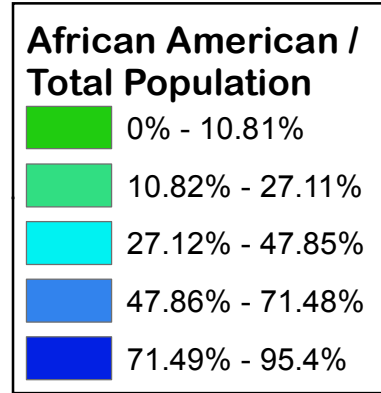
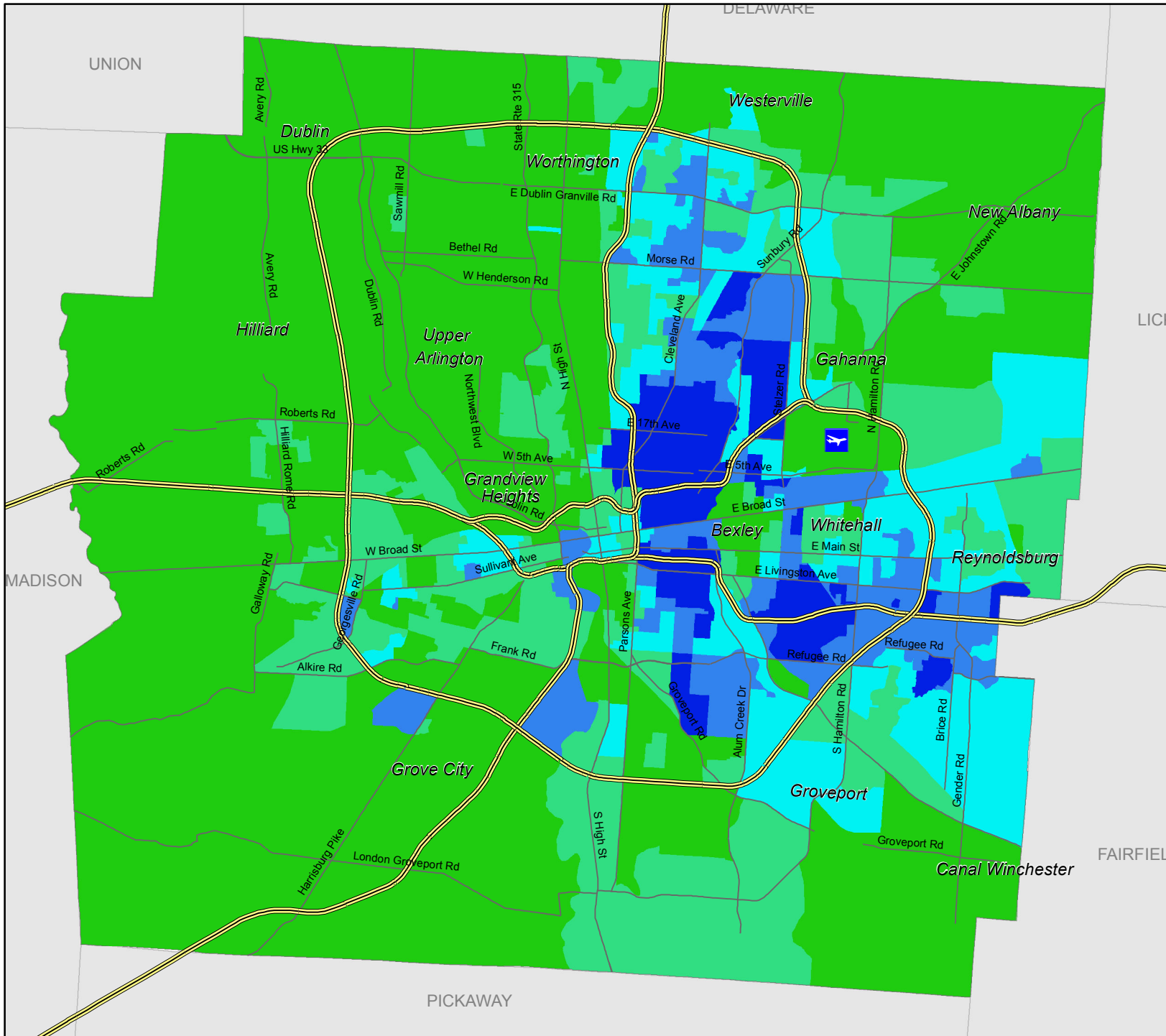
Party Affiliation Total (All 2008 Voters)	Voters	Percentage
Total:	564,971	100.00%
Unaffiliated:	265,224	46.94%
Democrat:	209,827	37.14%
Republican:	89,916	15.92%

Table 13:

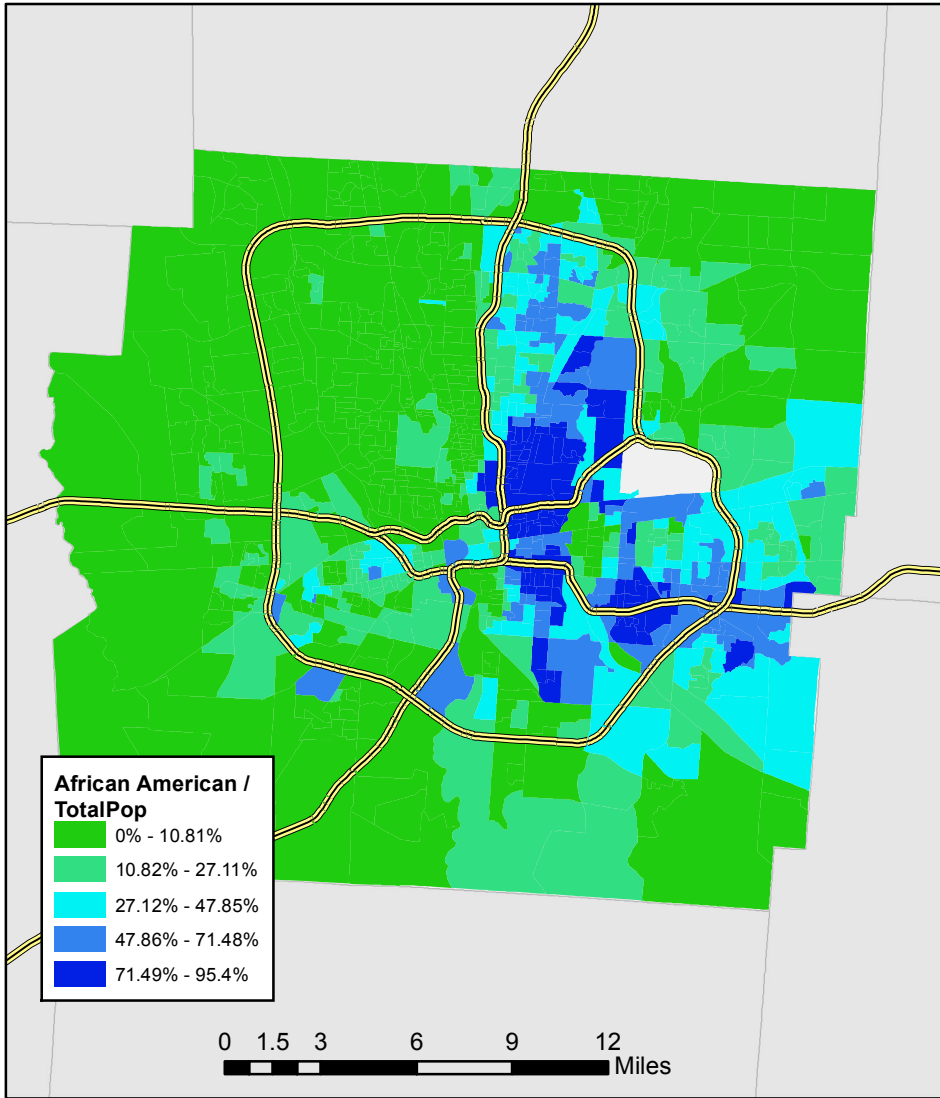
Party Affiliation EIP	Voters	Percentage
Total:	51,785	100.00%
Unaffiliated:	37,457	72.33%
Democrat:	11,195	21.62%
Republican:	3,006	5.80%

Early In-Person Voting Density

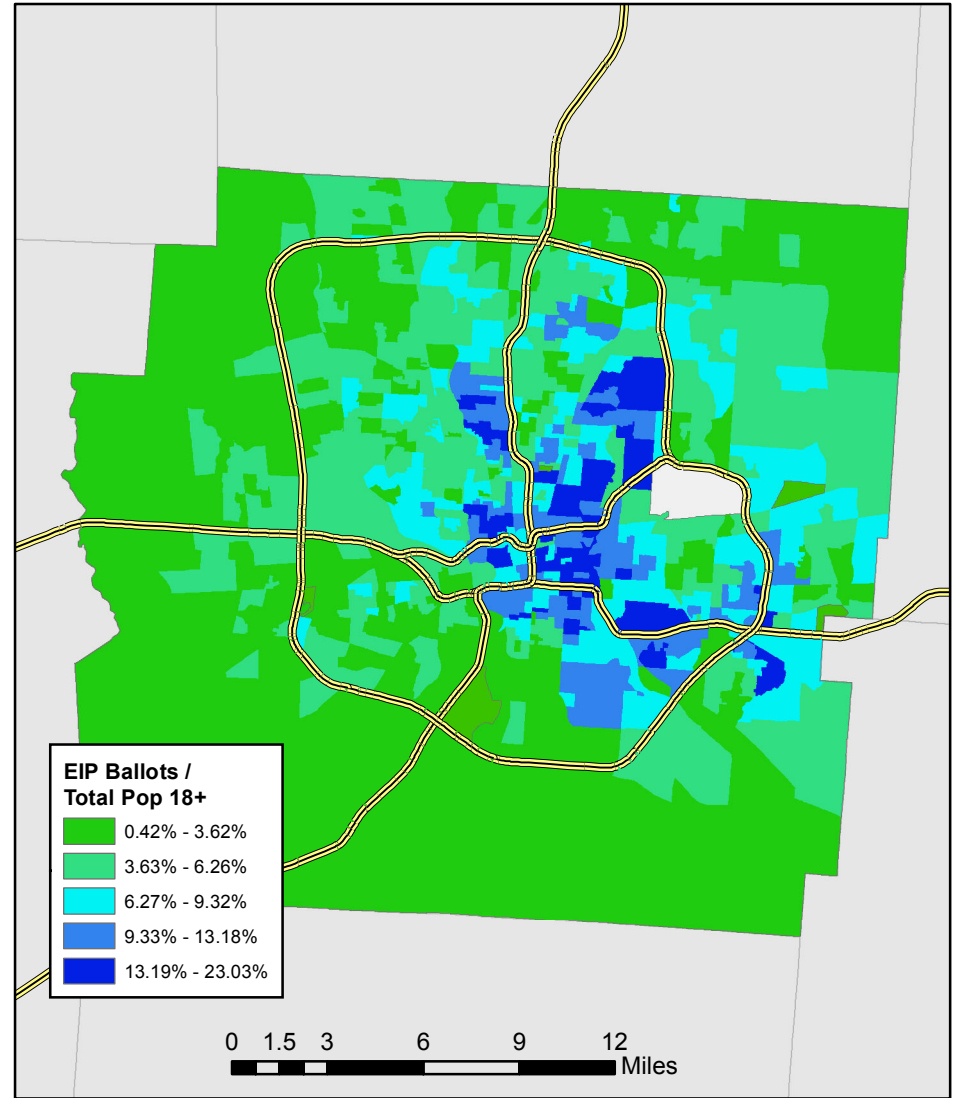




Side by Side Comparison



African American Population Density



Early In-Person Voting Density