

OHIO MAYOR'S COURTS

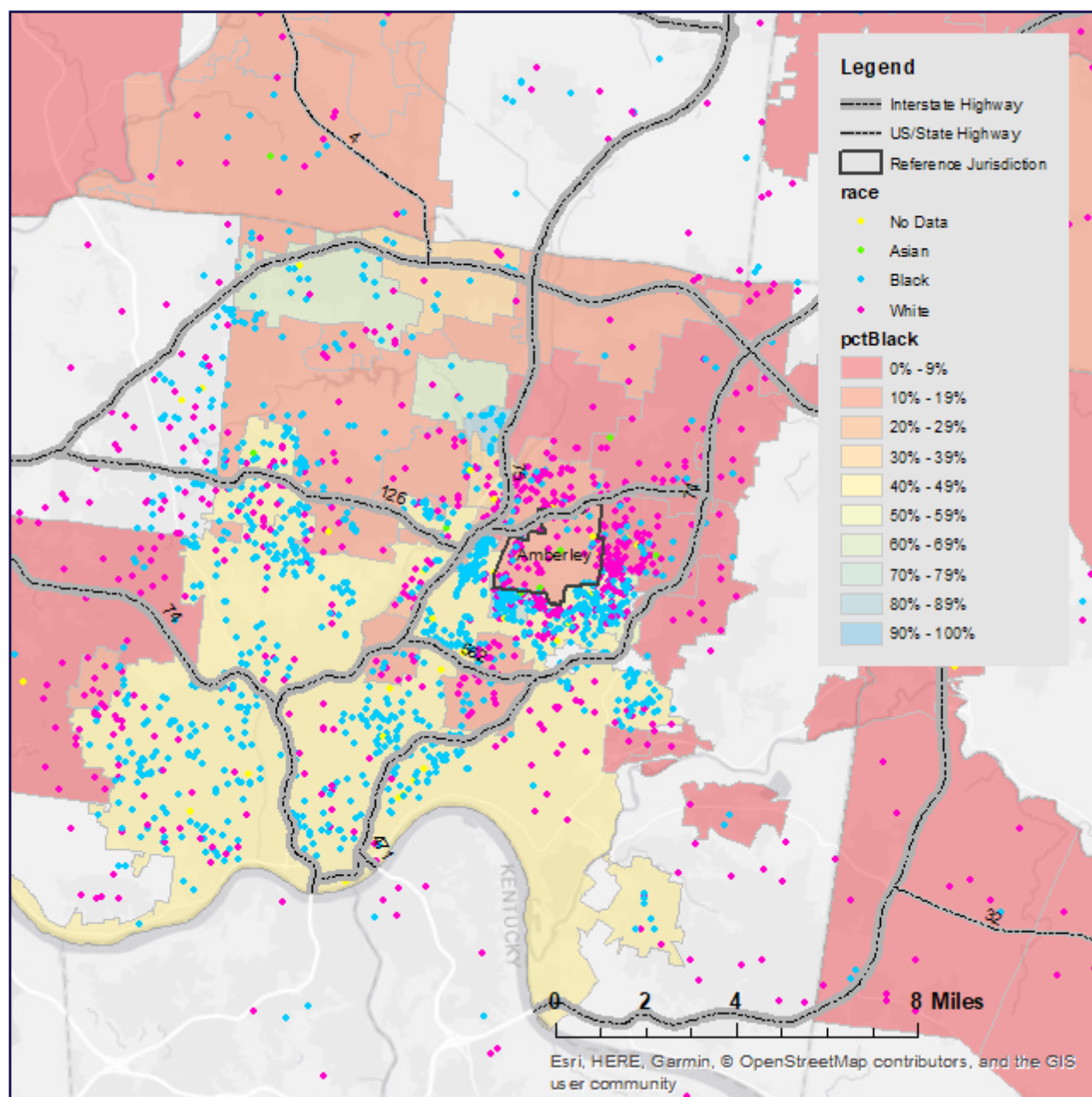
AMBERLEY

We analyzed 2,525 citations from November 2014 to November 2017 to create the map below.

This map shows where people lived at the time they received their citation from Amberley police officers or from Amberley mayor's court. The map covers a 12 mile radius around Amberley.

Because the average trip distance for drivers in the Midwest is 12.8 miles, these maps show the drivers most likely to pass through Amberley.

Though only 9.5 percent of residents are Black, the police officers and mayor's court in Amberley issued 54.0 percent of their citations to Black people. Amberley issued 78.9 percent of all citations to people who do not live in Amberley.



Each dot represents a person at their home address. The dots are color-coded to reflect the race of the person, and the municipalities on the map are color-coded to show the racial composition of the municipality.