

OHIO MAYOR'S COURTS

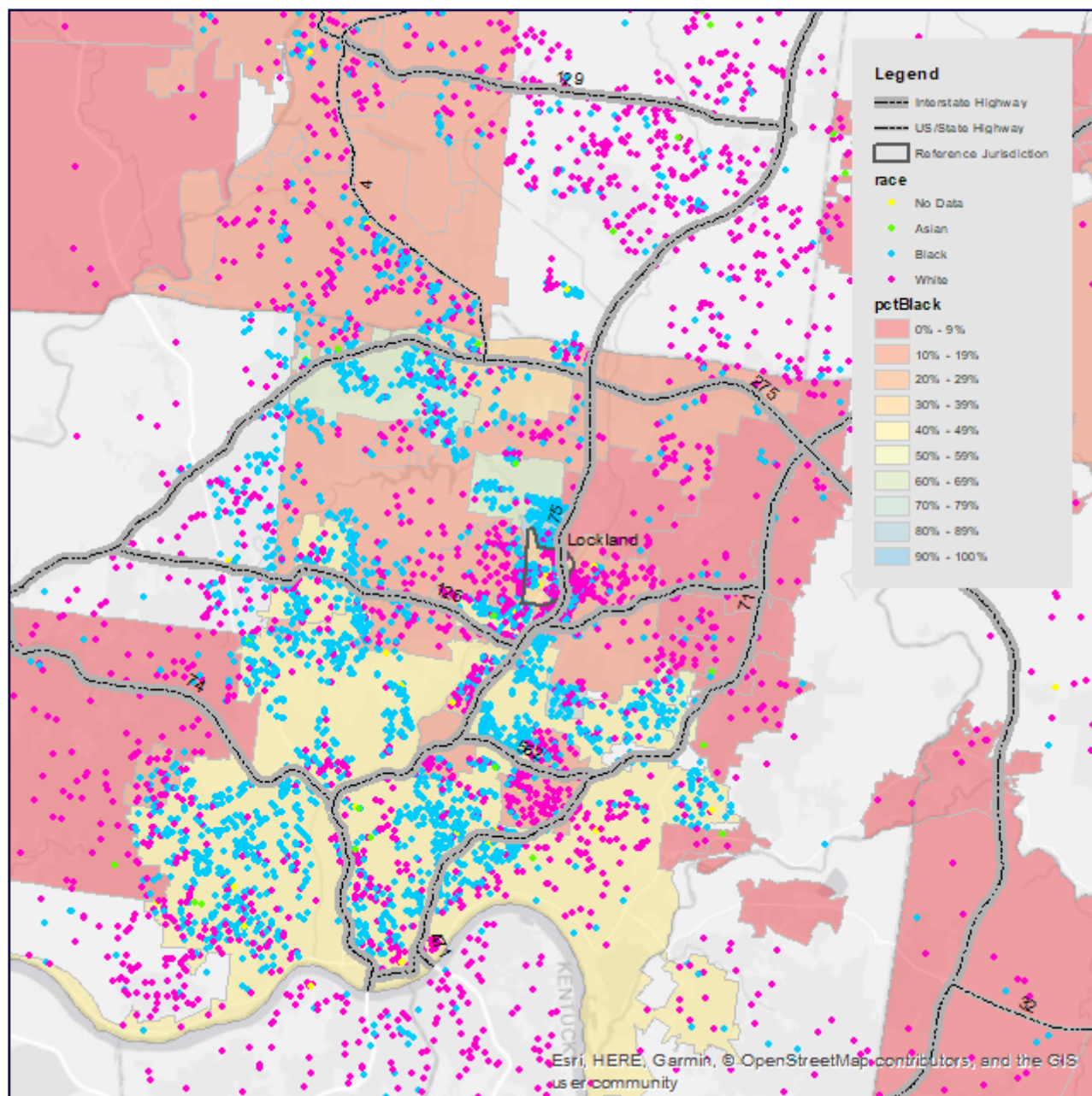
LOCKLAND

We analyzed 8,965 citations from November 2015 to November 2017 to create the map below.

This map shows where people lived at the time they received their citation from Lockland police officers or from Lockland mayor's court. The map covers a 12 mile radius around Lockland.

Because the average trip distance for drivers in the Midwest is 12.8 miles, these maps show the drivers most likely to pass through Lockland.

Though only 29.9 percent of residents are Black, the police officers and mayor's court in Lockland issued 44.5 percent of their citations to Black people. Lockland issued 94.9 percent of all citations to people who do not live in Lockland. In 2016, Lockland made \$728,479 net to municipality from its mayor's court.



Each dot represents a person at their home address. The dots are color-coded to reflect the race of the person, and the municipalities on the map are color-coded to show the racial composition of the municipality.