

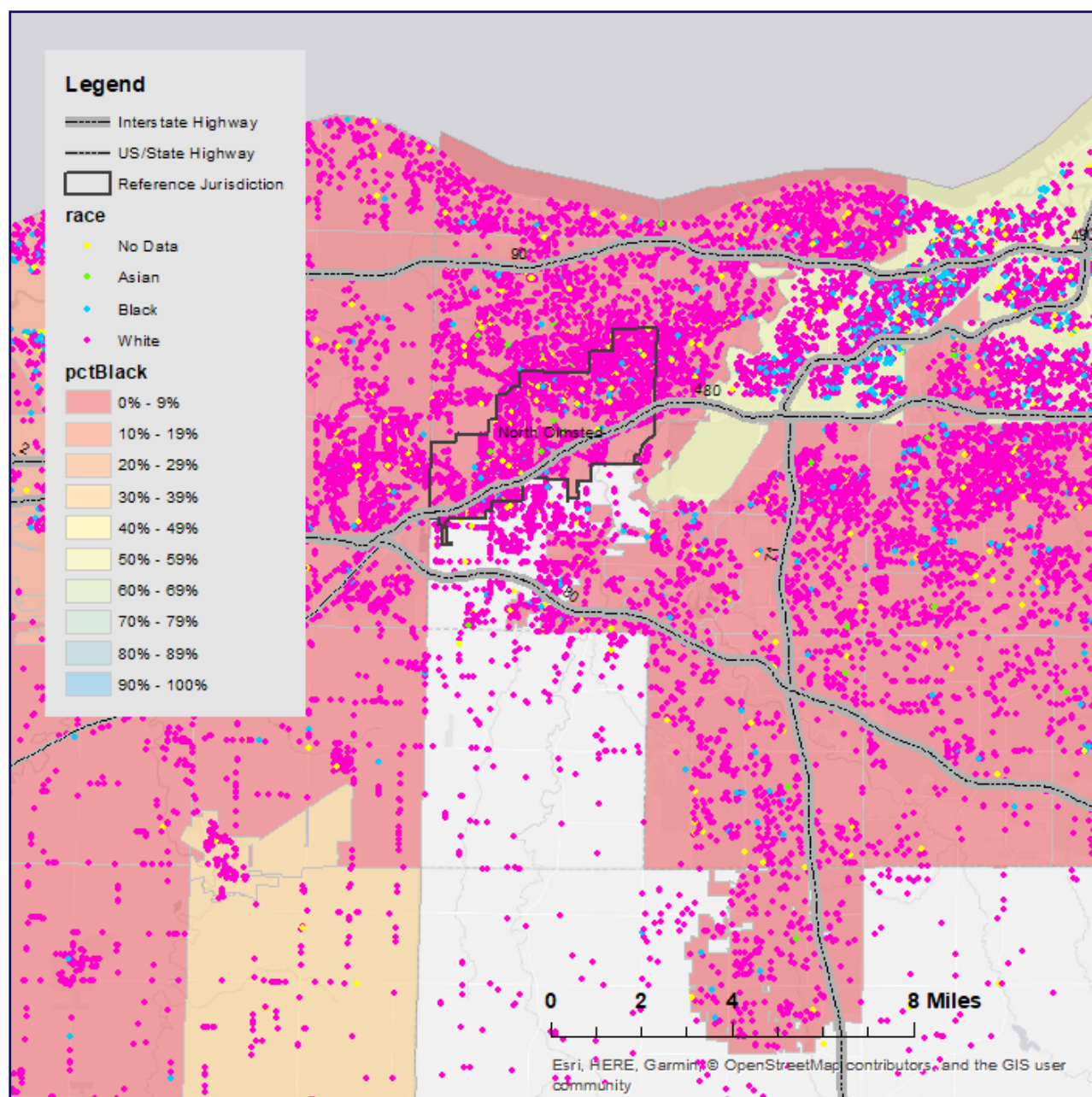
OHIO MAYOR'S COURTS

NORTH OLMSTED

We analyzed 40,621 citations from November 2012 to November 2017 to create the map below.

This map shows where people lived at the time they received their citation from North Olmsted police officers or from North Olmsted mayor's court. The map covers a 12 mile radius around North Olmsted. Because the average trip distance for drivers in the Midwest is 12.8 miles, these maps show the drivers most likely to pass through North Olmsted.

Though only 2 percent of residents are Black, the police officers and mayor's court in North Olmsted issued 10.6 percent of their citations to Black people. North Olmsted issued 88 percent of all citations to people who do not live in North Olmsted. In 2016, North Olmsted made \$1,017,747 net for its municipal budget from its mayor's court.



Each dot represents a person at their home address. The dots are color-coded to reflect the race of the person, and the municipalities on the map are color-coded to show the racial composition of the municipality.