

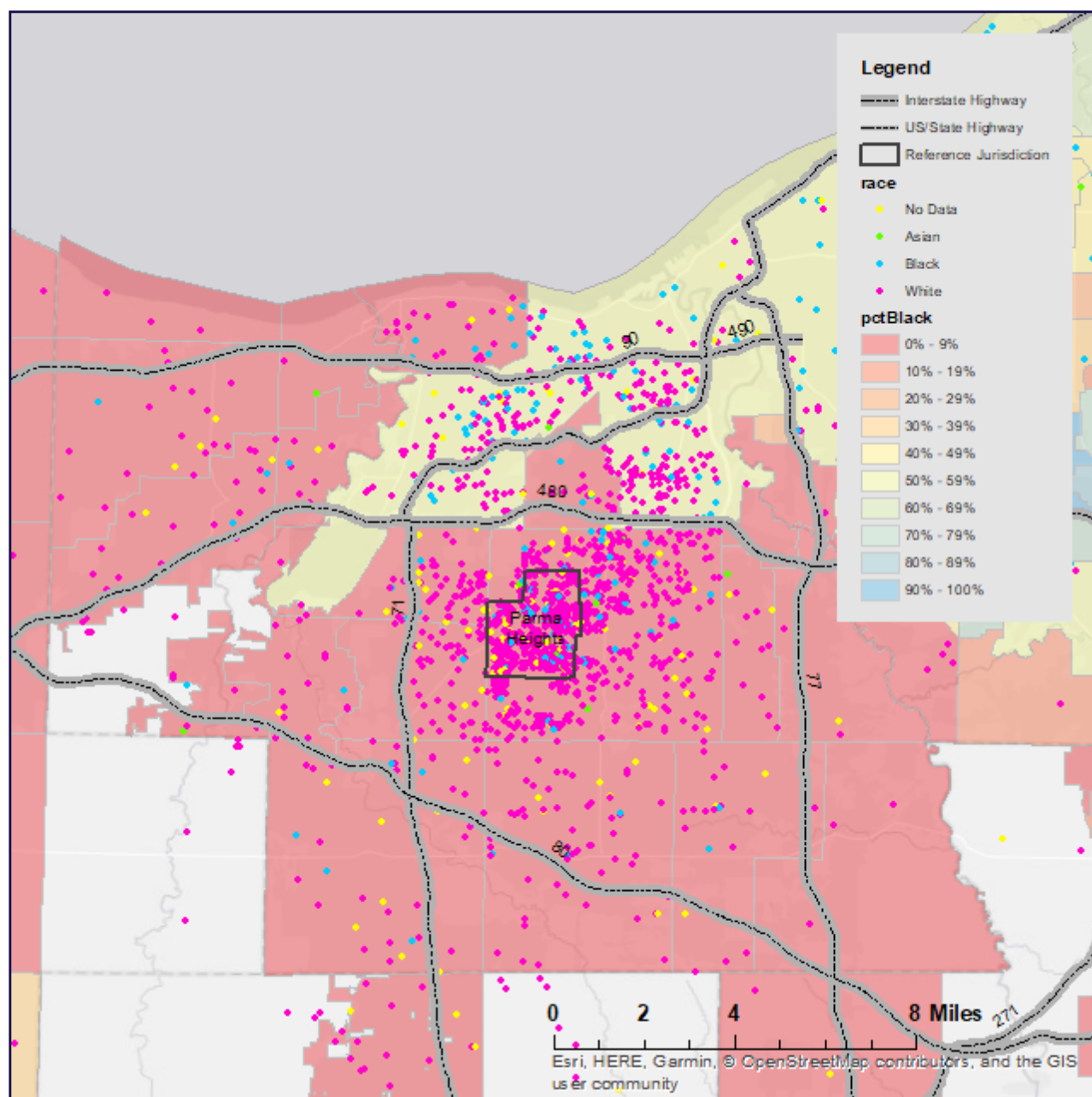
# OHIO MAYOR'S COURTS

## PARMA HEIGHTS

We analyzed 3,668 citations from November 2016 to November 2017 to create the map below.

This map shows where people lived at the time they received their citation from Parma Heights police officers or from Parma Heights mayor's court. The map covers a 12 mile radius around Parma Heights. Because the average trip distance for drivers in the Midwest is 12.8 miles, these maps show the drivers most likely to pass through Parma Heights.

**Though only 2 percent of residents are Black, the police officers and mayor's court in Parma Heights issued 10 percent of their citations to Black people. Parma Heights issued 58.9 percent of all citations to people who do not live in Parma Heights. In 2016, Parma Heights made \$353,638.57 net for its municipal budget from its mayor's court.**



*Each dot represents a person at their home address. The dots are color-coded to reflect the race of the person, and the municipalities on the map are color-coded to show the racial composition of the municipality.*