

OHIO MAYOR'S COURTS

LOCKLAND

We analyzed 8,965 citations from November 2015 to November 2017 to create the map below.

This map shows where people lived at the time they received their citation from Lockland police officers or from Lockland mayor's court. The map covers a 12 mile radius around Lockland.

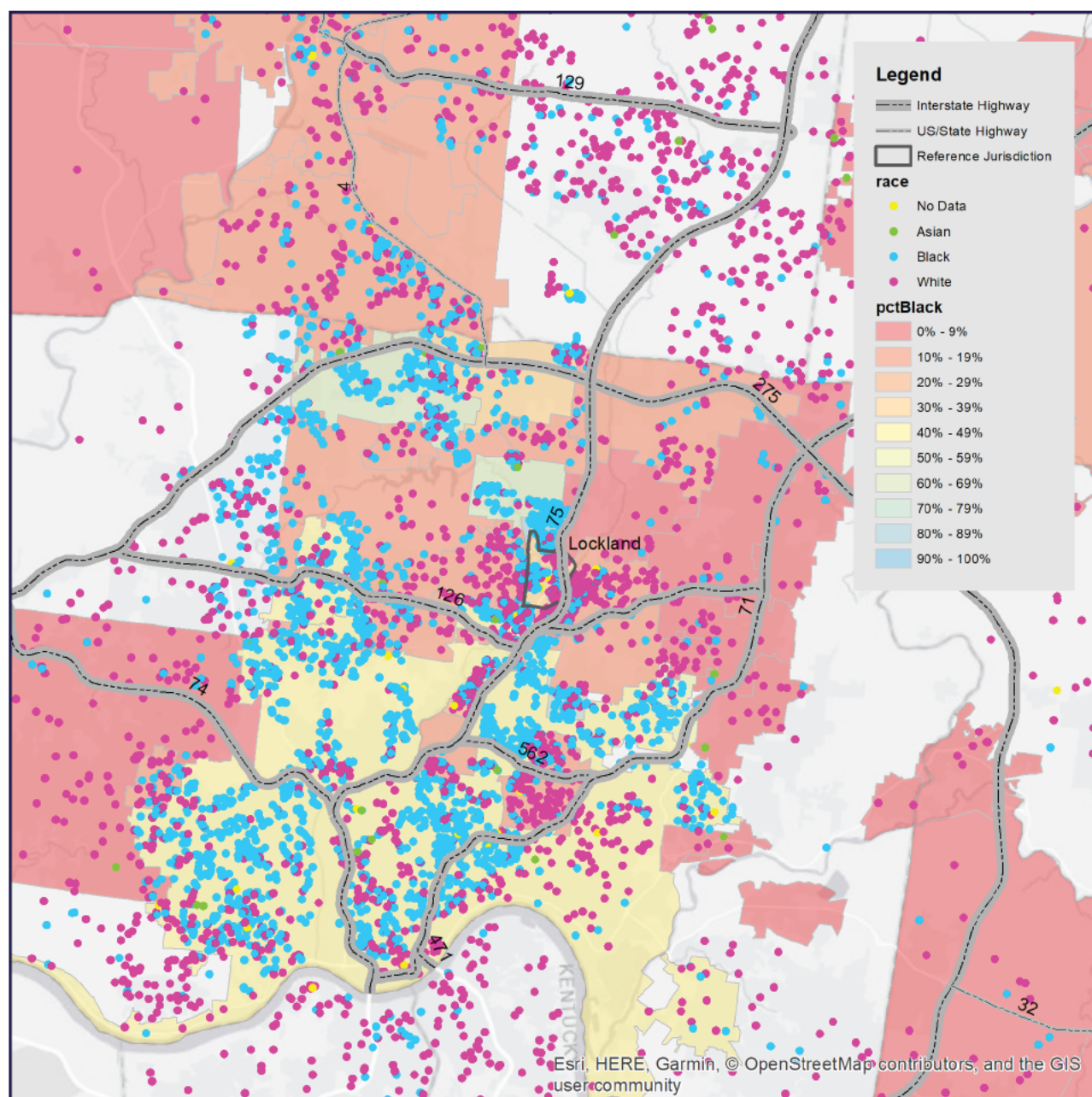
Because the average trip distance for drivers in the Midwest is 12.8 miles, these maps show the drivers most likely to pass through Lockland.

29.9%
BLACK RESIDENTS
IN MUNICIPALITY

44.5%
CITATIONS ISSUED TO
BLACK PEOPLE

94.9%
CITATIONS ISSUED TO
NON-RESIDENTS

\$728,479
NET REVENUE FROM
MAYOR'S COURT (2016)



Each dot represents a person at their home address. The dots are color-coded to reflect the race of the person, and the municipalities on the map are color-coded to show the racial composition of the municipality.