

OHIO MAYOR'S COURTS

PARMA HEIGHTS

We analyzed 3,668 citations from November 2016 to November 2017 to create the map below.

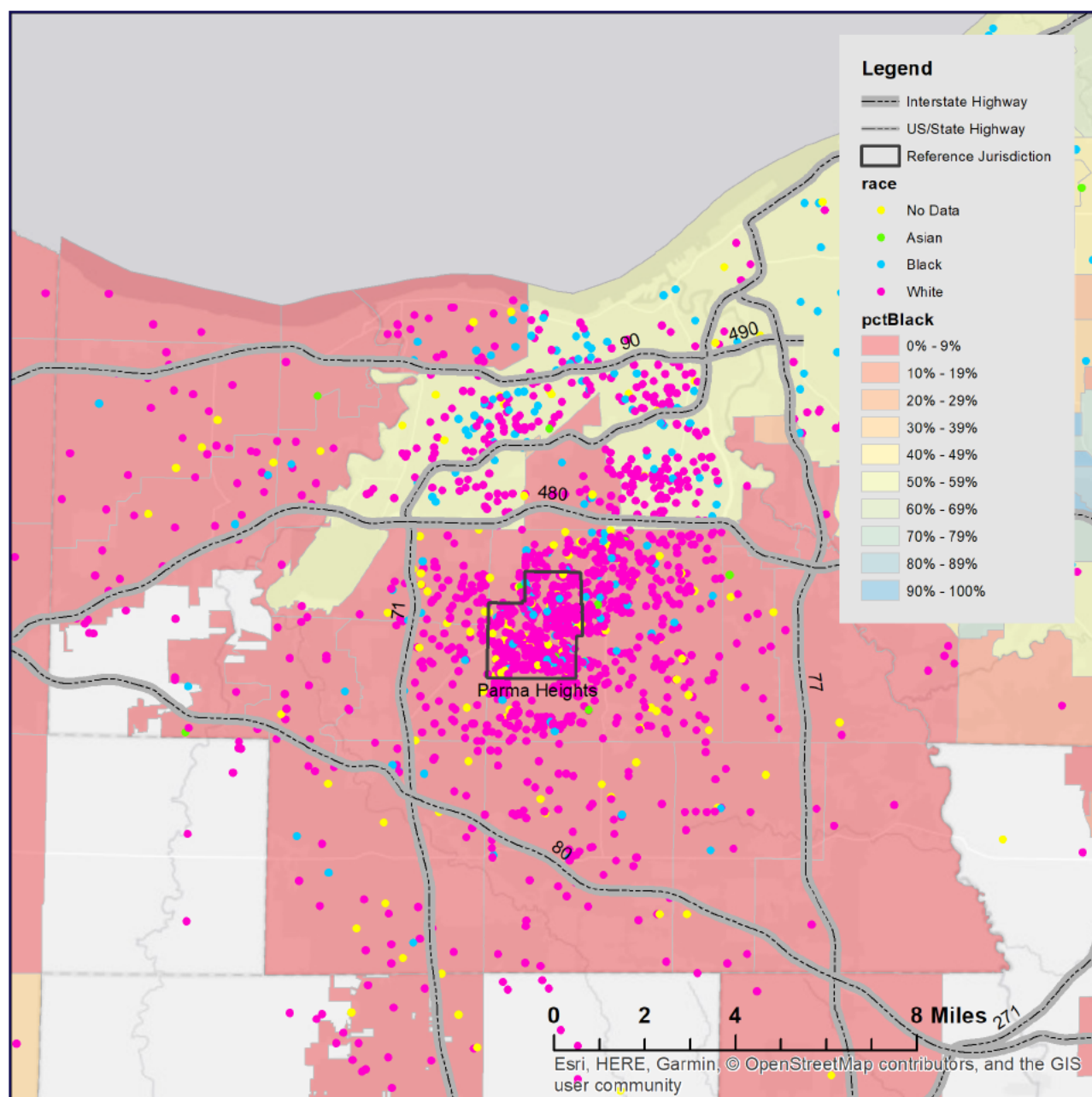
This map shows where people lived at the time they received their citation from Parma Heights police officers or from Parma Heights mayor's court. The map covers a 12 mile radius around Parma Heights. Because the average trip distance for drivers in the Midwest is 12.8 miles, these maps show the drivers most likely to pass through Parma Heights.

2%
BLACK RESIDENTS
IN MUNICIPALITY

10%
CITATIONS ISSUED TO
BLACK PEOPLE

58.9%
CITATIONS ISSUED TO
NON-RESIDENTS

\$353,638.57
NET REVENUE FROM
MAYOR'S COURT (2016)



Each dot represents a person at their home address. The dots are color-coded to reflect the race of the person, and the municipalities on the map are color-coded to show the racial composition of the municipality.