

# OHIO MAYOR'S COURTS

## PATASKALA

We analyzed 10,312 citations from May 2008 to November 2017 to create the map below.

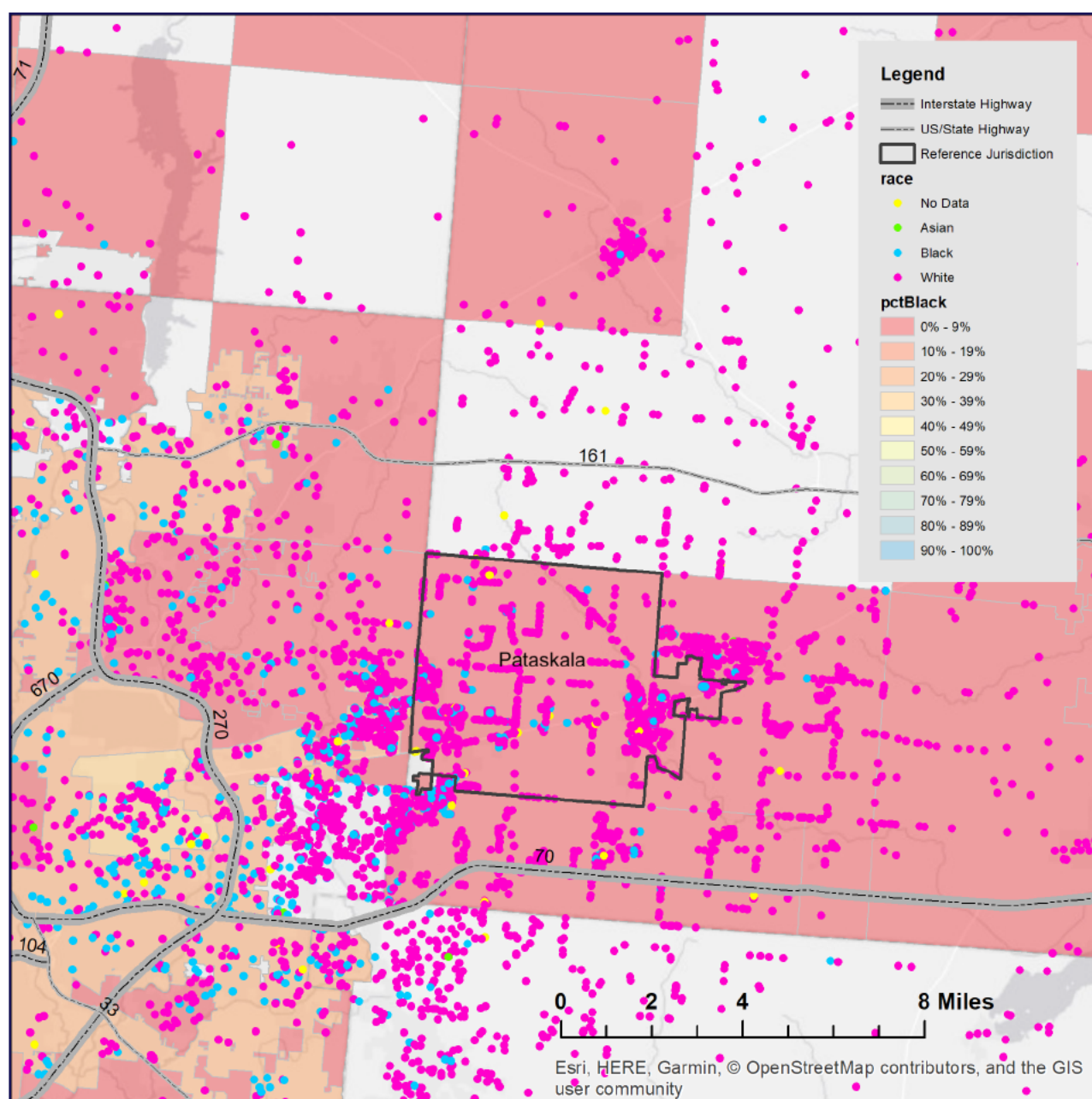
This map shows where people lived at the time they received their citation from Pataskala police officers or from Pataskala mayor's court. The map covers a 12 mile radius around Pataskala.

Because the average trip distance for drivers in the Midwest is 12.8 miles, these maps show the drivers most likely to pass through Pataskala.

**6%**  
BLACK RESIDENTS  
IN MUNICIPALITY

**10.9%**  
CITATIONS ISSUED  
TO BLACK PEOPLE

**58.5%**  
CITATIONS ISSUED  
TO NON-RESIDENTS



*Each dot represents a person at their home address. The dots are color-coded to reflect the race of the person, and the municipalities on the map are color-coded to show the racial composition of the municipality.*